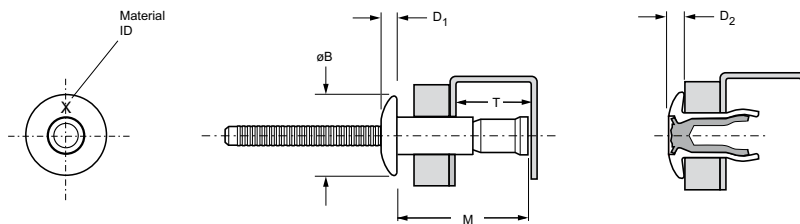


# Monobolt® 2711 (CCPV)

For installation information please refer to the tooling overview and manuals on our website [www.avdel-global.com](http://www.avdel-global.com).  
 Pour les conditions de pose, merci de vous référer à la description de l'outil et aux manuels disponibles sur notre site Web.  
 Angaben zur Verarbeitung entnehmen Sie bitte der Geräteübersicht und den Betriebsanleitungen auf unserer Website.  
 Per informazioni sull'installazione preghiamo consultare i manuali e la panoramica degli attrezzi sul nostro sito web.  
 Para ver información sobre máquinas de colocación, consulte nuestra página web, apartados visión general de máquinas y manuales.



English	Français	Deutsch	Italiano	Español
Protruding head	Tête bombée	Flachrundkopf	Testa tonda	Cabeza alomada
Body: stainless steel* Natural	Corps: Inox* Brut	Hülse: Edelstahl* Unbehandelt	Corpo: Acciaio inox* Nessuna finitura	Cuerpo: Acero inoxidable* Natural
Stem: stainless steel* Natural	Tige: Inox* Brut	Dorn: Edelstahl* Unbehandelt	Gambo: Acciaio inox* Nessuna finitura	Vástago: Acero inoxidable* Natural
*: AISI 304				



Ø					M	Ø B	D <sub>1</sub>	T	D <sub>2</sub>			Part No/ref
nom.	min.	max.	min.	max.	max.	max.	max.	min.	max.	lbf <sup>(1)</sup>	lbf <sup>(1)</sup>	
3/16" (4.8 mm)	.064	.270	.193	.201	.716	.395	.083	.410	.073	1450	1150	02711-00613 (CCPV-06-04)
	.064	.437			.962			.530				02711-00617 (CCPV-E06-07)
1/4" (6.4 mm)	.080	.375	.260	.276	.933	.525	.114	.480	.104	2650	2350	02711-00817 (CCPV-08-06)
	.080	.625			1.296			.645				02711-00824 <sup>(2)</sup> (CCPV-E08-10)
3/8" (10 mm)	.120	.625	.392	.409	1.425	.798	.160	.875	.156	5863	4361	02711-01228

all dimensions in inches / en pouces / alle Maße in Zoll / in pollici / en pulgadas

1) typical values / valeurs moyennes / typische Werte / Valori tipici / resistencias máximas recomendadas

2) also available in 316 grade/A4 / aussi disponible dans Grade 316/A4 / auch in 316 grade/A4 erhältlich / anche disponibile in 316 grade/A4 / también disponible en 316 grade/A4



[www.avdel-global.com](http://www.avdel-global.com)

© 2010 Infastech, Rev. 03.2012

Monobolt® is a trademark of Avdel UK Limited

Data shown is subject to change without prior notice as a result of continuous product development and improvement policy.  
 Your local Avdel representative is at your disposal should you need to confirm latest information.